



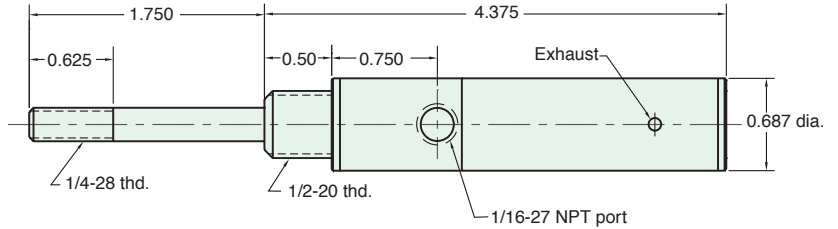
# 9/16" BORE BRASS HEAVY DUTY CYLINDER

## 9SS-AR-1

**Mount:** Stud  
**Type:** Single Acting  
 Spring Extended

**Available Stroke Lengths:** 1"

Add **-N** to the end of the part number for a non-threaded rod



Nut included, but not shown on drawing

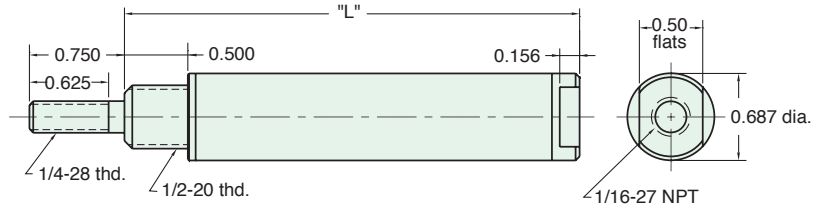
## H9S-□S

**Mount:** Stud  
**Type:** Single Acting  
 Spring Return

Stroke Length "L"	1"	2"	3"
	3.593	5.250	6.906

**To order:** Indicate stroke in box □

Add **-N** to the end of the part number for a non-threaded rod



Nut included, but not shown on drawing

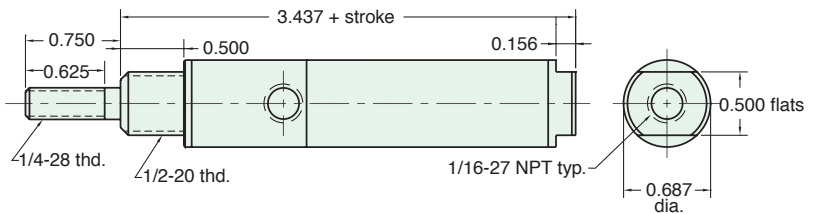
## H9S-□D

**Mount:** Stud  
**Type:** Double Acting

**Available Stroke Lengths:** 1", 2", 3", 4", 5", 6"

**To order:** Indicate stroke in box □

Add **-N** to the end of the part number for a non-threaded rod



Nut included, but not shown on drawing

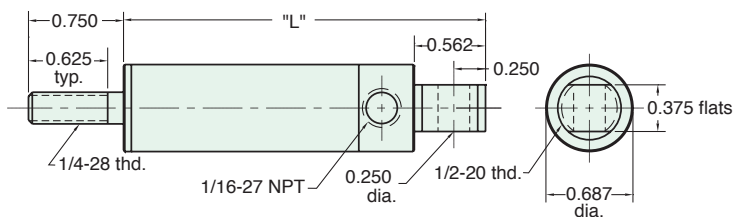
## H9C-□S

**Mount:** Clevis  
**Type:** Single Acting  
 Spring Return

Stroke Length "L"	1"	2"	3"
	3.875	5.531	7.187

**To order:** Indicate stroke in box □

Add **-N** to the end of the part number for a non-threaded rod



Nut included, but not shown on drawing